

SPECIAL FEATURES

STAINLESS STEEL CONSTRUCTION
SUITABLE FOR CLEAN AIR, GASES & NON CRYSTALLIZED LIQUIDS

APPLICATIONS

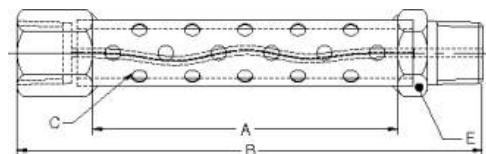
COOLING TOWERS ARE USED MAINLY TO PROTECT PRESSURE INSTRUMENTS, GAUGES, SWITCHES AND TRANSMITTERS DIRECTLY COMING IN CONTACT WITH HIGH TEMPERATURE PROCESS FLUIDS OR VAPOURS FILLED WITH CONDENSATION FLUIDS. THESE ARE MOUNTED BETWEEN PROCESS AND PRESSURE INSTRUMENT. THEY REDUCE PROCESS PULSATION, ACT AS HEAT DISPENSER AND GENERATE COOLING EFFECT TO SAVE INSTRUMENT FROM WORKING AT DANGEROUS TEMPERATURE.



STANDARD VERSION

Operating temperature Type CT1 & CT2 - Up to 220°C
 Type CT3 - Up to 150°C
 Process connection 1/2" BSP(M)
 Instrument connection 1/2" BSP(F)
 Material of connection AISI 316 SS

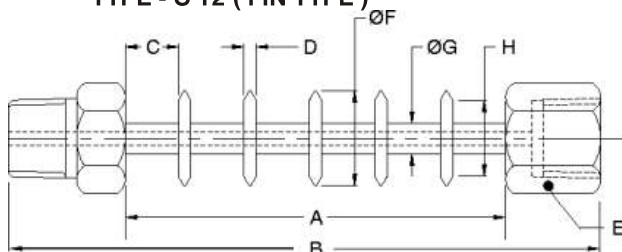
TYPE - C T1 (PERFORATED TYPE)



A	B	E	C
100	150	A/F 25.0	Ø5.0

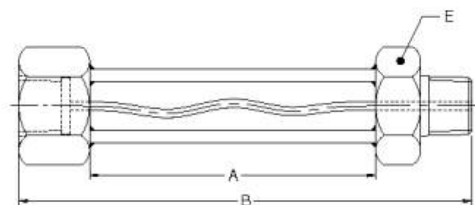
DIMENSIONS - STANDARD VERSION

TYPE - C T2 (FIN TYPE)



A	B	C	D	ØF	ØG	H	E
100	150	14	3.25	25	10	20	A/F 25.0

TYPE - C T3 (CAPILLARY TYPE)



A	B	E
100	150	A/F 25.0

Notes : • Drawings are not to scale. • All Dimensions are in mm.

HOW TO ORDER

BASIC MODEL

CODE TYPE

C T1 PERFORATED **C T2** FIN TYPE **C T3** CAPILLARY

BODY

CL AISI 316 SS (Standard) **CM** AISI 316L SS

CONNECTIONS

2BM.2BF 1/4" BSP (M x F) **3BM.3BF** 3/8" BSP (M x F) **4BM.4BF** 1/2" BSP (M x F)
2NM.2NF 1/4" NPT (M x F) **3NM.3NF** 3/8" NPT (M x F) **4NM.4NF** 1/2" NPT (M x F)

Example

AC-01

XXX

XX

XXX.XXX

Note : Connections like Metric/ PT/ PF/ Flaired/ UNF/ G/ R etc can be provided on request.

Ordering Example: **AC-01- XXX - XX - XXX.XXX**